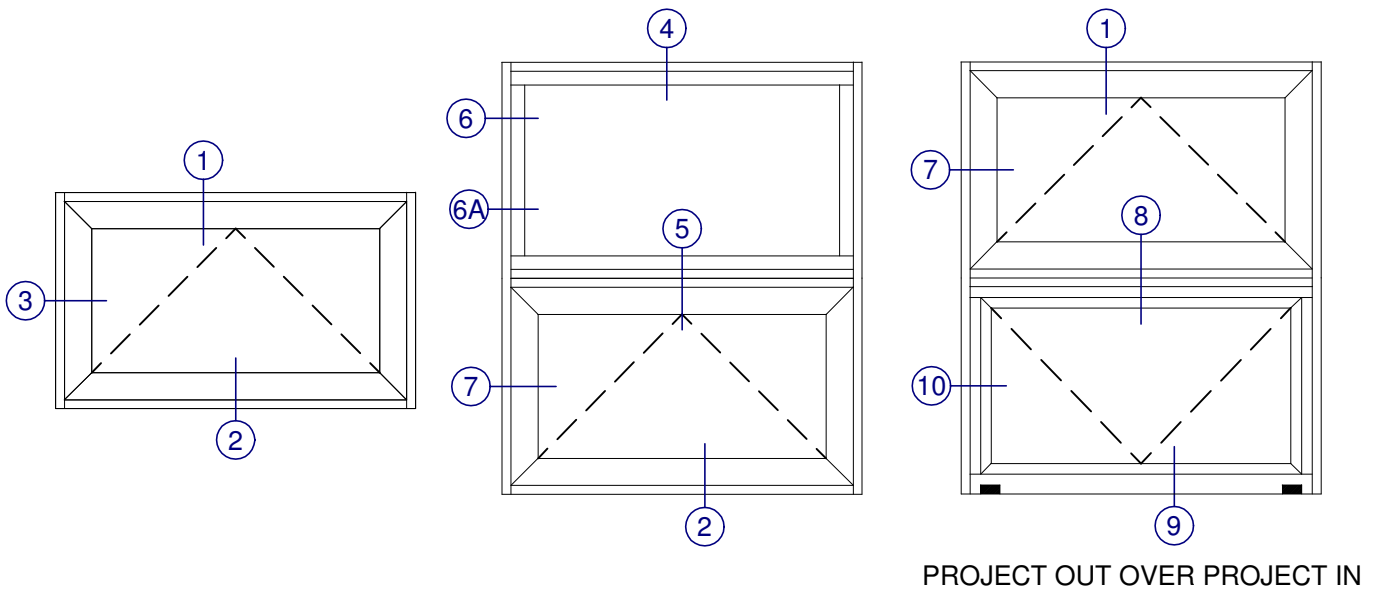
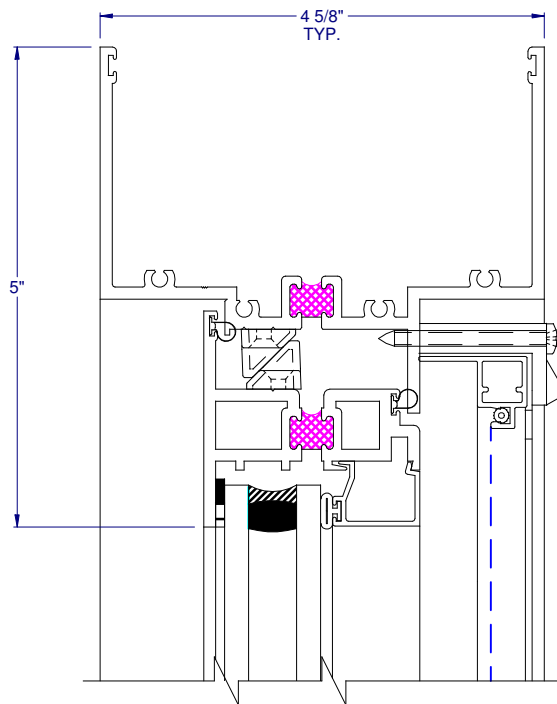


ELEVATIONS

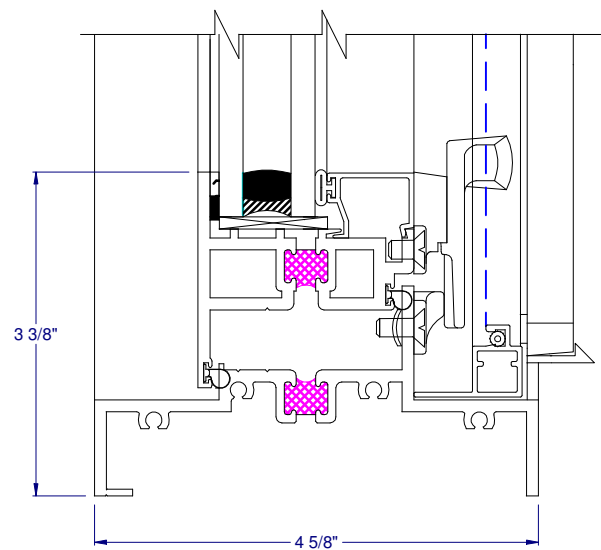
PROJECT OUT



HALF SCALE SECTIONS



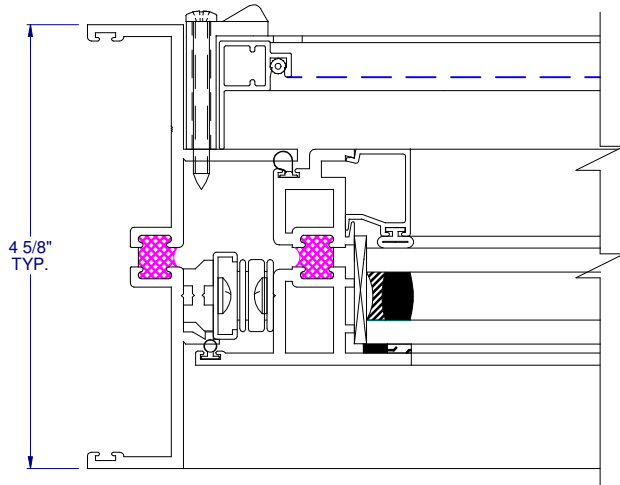
① VENT HEAD



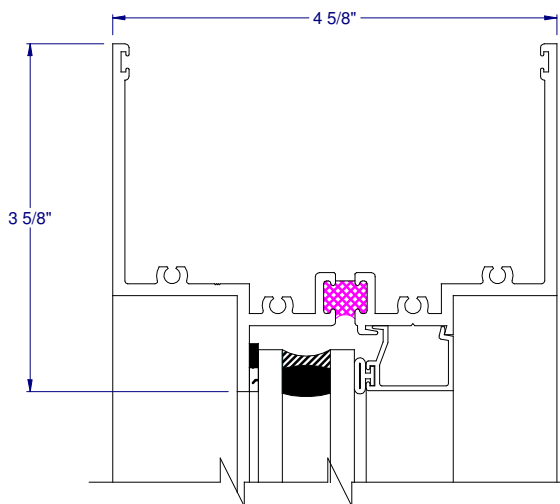
② VENT SILL

**HALF SCALE SECTIONS**

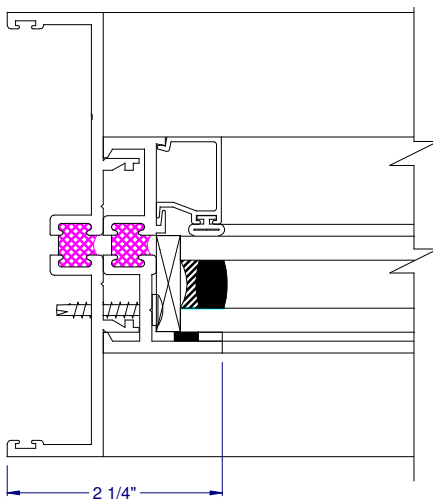
**PROJECT OUT**



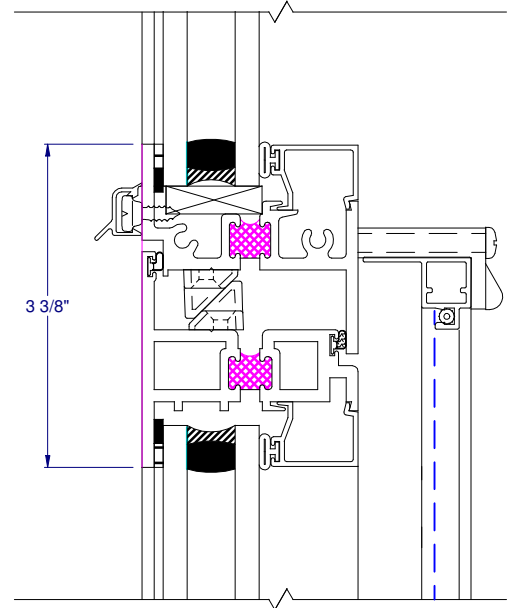
③ VENTJAMB



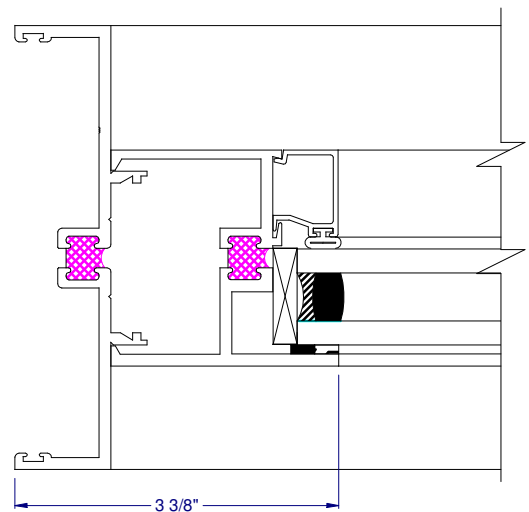
④ FIXED HEAD



⑥ FIXED JAMB



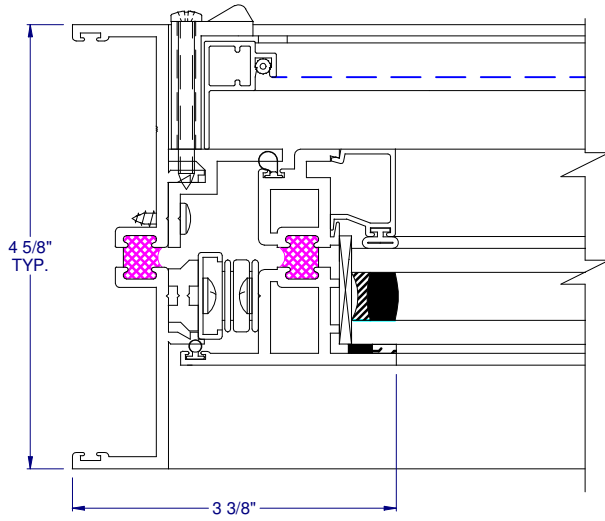
⑤ HORIZ. INTERGAL MULLION  
FIXED OVER PROJECT OUT



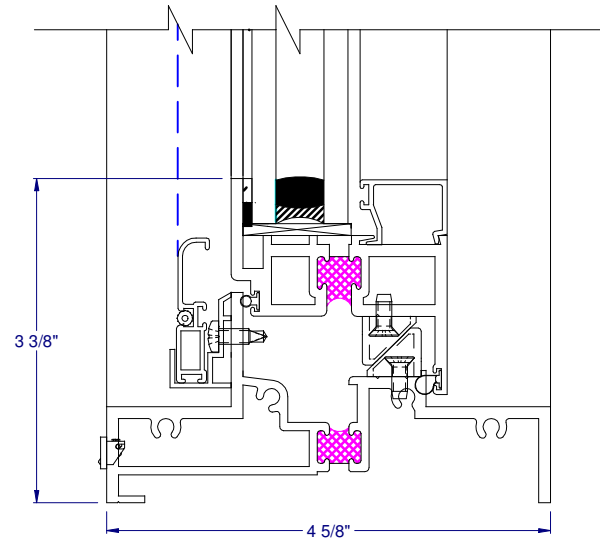
⑥A EQUAL SITE LINE FIXED JAMB

**HALF SCALE SECTIONS**

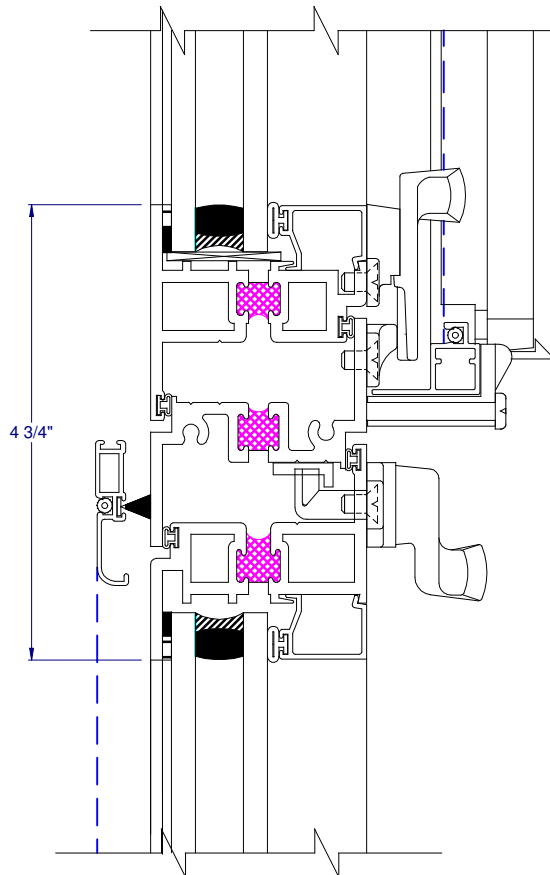
PROJECT OUT



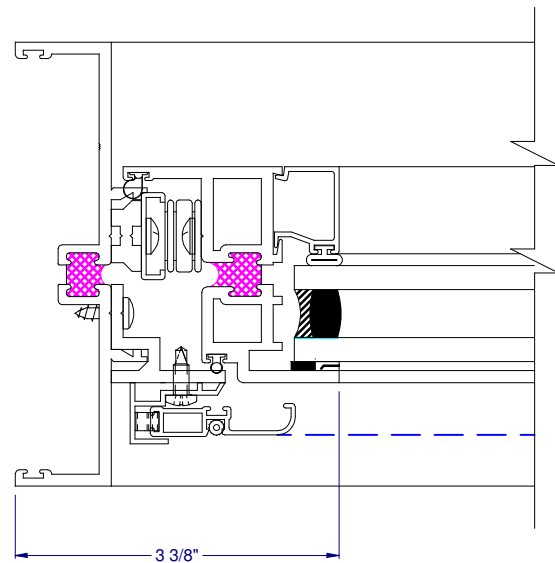
⑦ VENTJAMB



⑨ VENT SILL



⑧ HORIZ. INTERGAL MULLION  
PROJECT OUT OVER PROJECT IN



⑩ VENT JAMB

**HANDLING GUIDELINES**

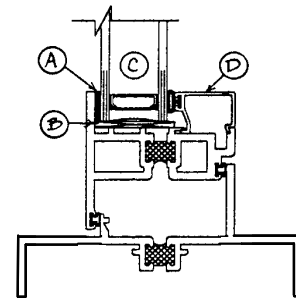
**PROJECT OUT**

**Window Installation**

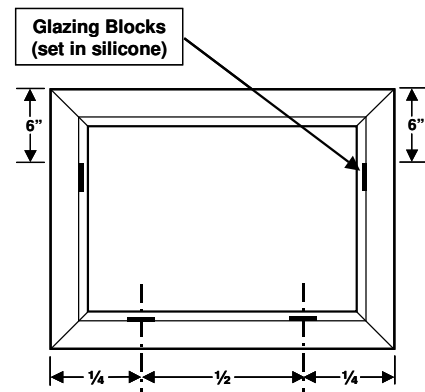
- Windows shall be installed square, plumb, and level without binding.
- Insulation should be inserted between the window and the opening.
- Refer to the approved shop drawings for blocking, anchor, and sealant details.
- Refer to sealant manufacturer's guidelines for sealant selection and application.
- The vent operating force shall be field adjusted after the window installation with the slotted adjustment screw on the black shoe in the hinge track.
- Drip caps shall be field-applied and field-sealed.
- Casement windows shall be blocked and secured with screws to construction on the hinge jamb.
- Verify that the weep hole covers are working properly and not covered with sealant.
- Optional internal blinds are factory-applied in the "up" position, to be lowered in the field.
- Optional screens are provided separately from the windows for field application onto windows.

**Operation/Reglazing**

- **To Open:** Rotate the handle towards window center until perpendicular to floor, and open vent.
- **To Close:** Swing vent to "closed" position. Rotate handle to horizontal "closed" position.
- **To Release Optional Limit Arm:** Insert special release key. (Limit arm must be re-engaged to avoid vent damage.)
- **To Replace Hardware:** Remove mounting screws. Vent must be supported to avoid damage.
- **To Reglaze:** (See **Figure #1**)
  1. Clean glazing area and apply glazing tape (A).
  2. Place glazing blocks (B). (See **Figure #2** for spacing.)
  3. Position 1" insulating glass (C).
  4. Install glazing beads with gasket already inserted in them (D).



**Figure #1**



**Figure #2**

**Maintenance**

Your new TRACO window will last for many years with a minimum of maintenance and routine care when this schedule is followed:

- **Every Month:** Operate the vents several times to keep the hinges lubricated and prevents sticking. Inspect for broken or missing hardware and weatherstripping.
- **Every Three Months:** Vacuum the window frame sill to remove debris, dirt or foreign matter, which may have accumulated and clogged the weep (water drainage) slots.
- **Every Six Months:** Clean the window frame, sill, and jambs with a mild soap solution to remove any buildup of dirt, sludge, or grime, which may interfere with the hinges.
- **Once Per Year:** Lubricate the hinges and locking mechanisms with lubricant. Operate several cycles to work lubricant into hardware and ease operation. Check weatherstripping and gaskets. Replace loose or missing parts. Inspect all operating hardware for excessive wear or breakage.

Contact your nearest TRACO dealer for replacement parts as required.

5/8" INTERNAL BLIND

PROJECT OUT

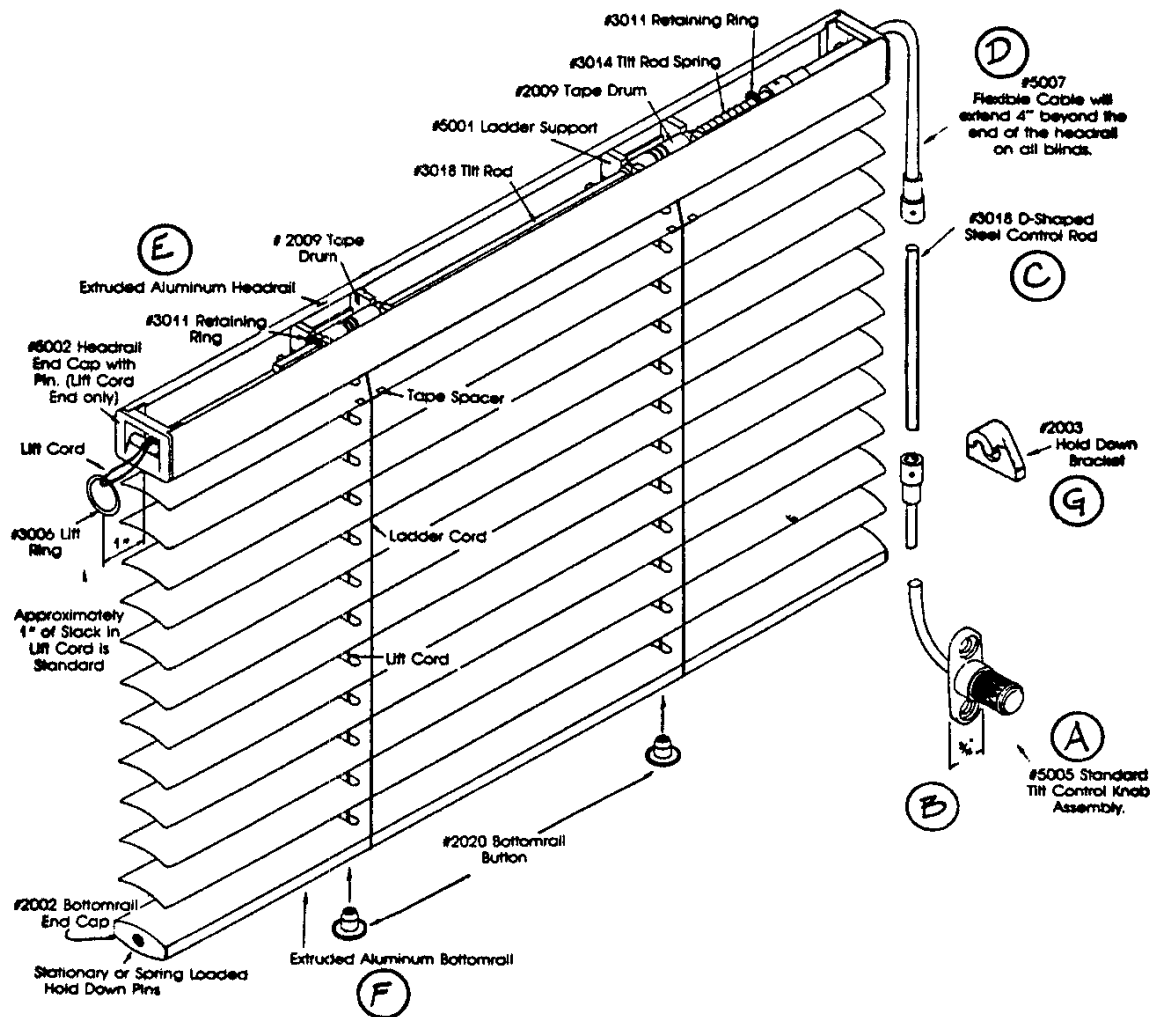
**Installation**

➤ **To Install Knob and Linkage:**

1. Install knob (A) with flexible rod attached, using two #6 x 3/8" screws. (B)
2. Slip "D"-shaped control rod (C) into vent jamb upper access hole, align with brass connector of lower flexible rod and tighten set screw.
3. Install upper flexible rod (D) and tighten set screws in both brass connectors.

➤ **To Install Blind:**

1. Mount two blind brackets in vent head with blind bracket screws.
2. Install upper flexible rod brass connector to horizontal rod in blind header (E). Verify that knob will tilt slats.
3. Secure blind header into brackets and secure blind rail (F) into hold downs. (G)



Internal blind head rail shall be .625" x .625" x .050" and bottom rail shall be .625" x .375" x .050", both to be 6063-T5 extruded aluminum with a powder coat finish. Slats shall be .008" thick virgin aluminum alloy finished with enamel finish, color to be from standard color chart as selected by the architect. Tilt control knob shall be .500" diameter with perimeter serrations. Blind shall be designed with a slip mechanism which will minimize damage due to over tilting the blind. Optional removable key operator and optional tilt control knob angled at 30° are available.

**HARDWARE**


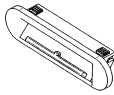


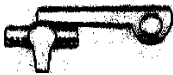





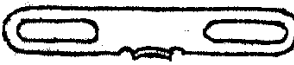

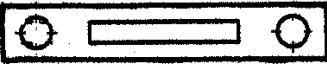




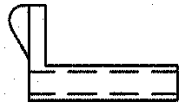
**PROJECT OUT**

The TRACO Warranty Label, found on every TRACO product, provides important information:

Order #	712070	04/11/05	Order Date
Model #	TR9000 B3 B3	OBDS A , CLDS A	Glass Type
Window Size	SIZE 48 X 95	60.1006, 60.0001	
Glass Size	GLASS 42 5/8 X 44 3/8		
<b>** WARRANTY *** DO NOT REMOVE **</b>			

The Warranty Label is located under the vent right glazing bead (*inside looking out*).

When ordering parts, please provide Order # from Warranty Label (above), Part #, and Part Name.

 <p><b>Concealed Hinge</b> specify fixed arm length</p>	 <p><b>Weep Cover</b> WH #30-2338 BL #30-2339</p>
 <p><b>RH Plain</b> (LH opp.) #30-0401 #30-0402</p>	 <p><b>Strike</b> #30-0403</p>
 <p><b>RH Pole</b> (LH opp.) #30-0451 #30-0450</p>	 <p><b>FA220 Limit Arm</b> #30-0412</p>
 <p><b>Custodial Lock</b> #30-0444</p>	 <p><b>FA220 Release Key</b> #30-0413</p>
 <p><b>Custodial Wrench</b> #30-0445</p>	 <p><b>Finger Pull</b> #30-1557</p>
 <p><b>2 Point Strike</b> #30-0431</p>	 <p><b>Dual Glaze Butt Hinge</b> #30-2987</p>
 <p><b>2 Point Gasket</b> #30-2158</p>	 <p><b>Dual Glaze Swivel Clip</b> #30-2994</p>
 <p><b>2 Point w/o Handle</b> #30-0516</p>	 <p><b>Screen Wicket</b> WH#30-0425 BZ#30-0426 BL#30-0424</p>
 <p><b>2 Point w/ Handle</b> #30-0515</p>	 <p><b>Screen Swivel Clip</b> WH #30-1417 BZ #30-1415 BL #30-1416</p>